

Trelona™ ATBS Home Monitoring System: Proven protection for your home.

Trelona™ ATBS eliminates termite colonies in and around your home and offers advantages to your family with long-term protection of your biggest investment — your home.



Low profile
Sits at soil level, minimizing interference with lawn mowers and foot traffic.

Quik-Lock® cap
Designed to minimize tampering by children and pets.

Preferred cellulose
Termites prefer the **Puri-Cell®** matrix over the wood used to construct your home.

Large containerized bait load
Ensures that enough bait is present to eliminate a termite colony around your home. Plus, bait is designed for only specific pests.

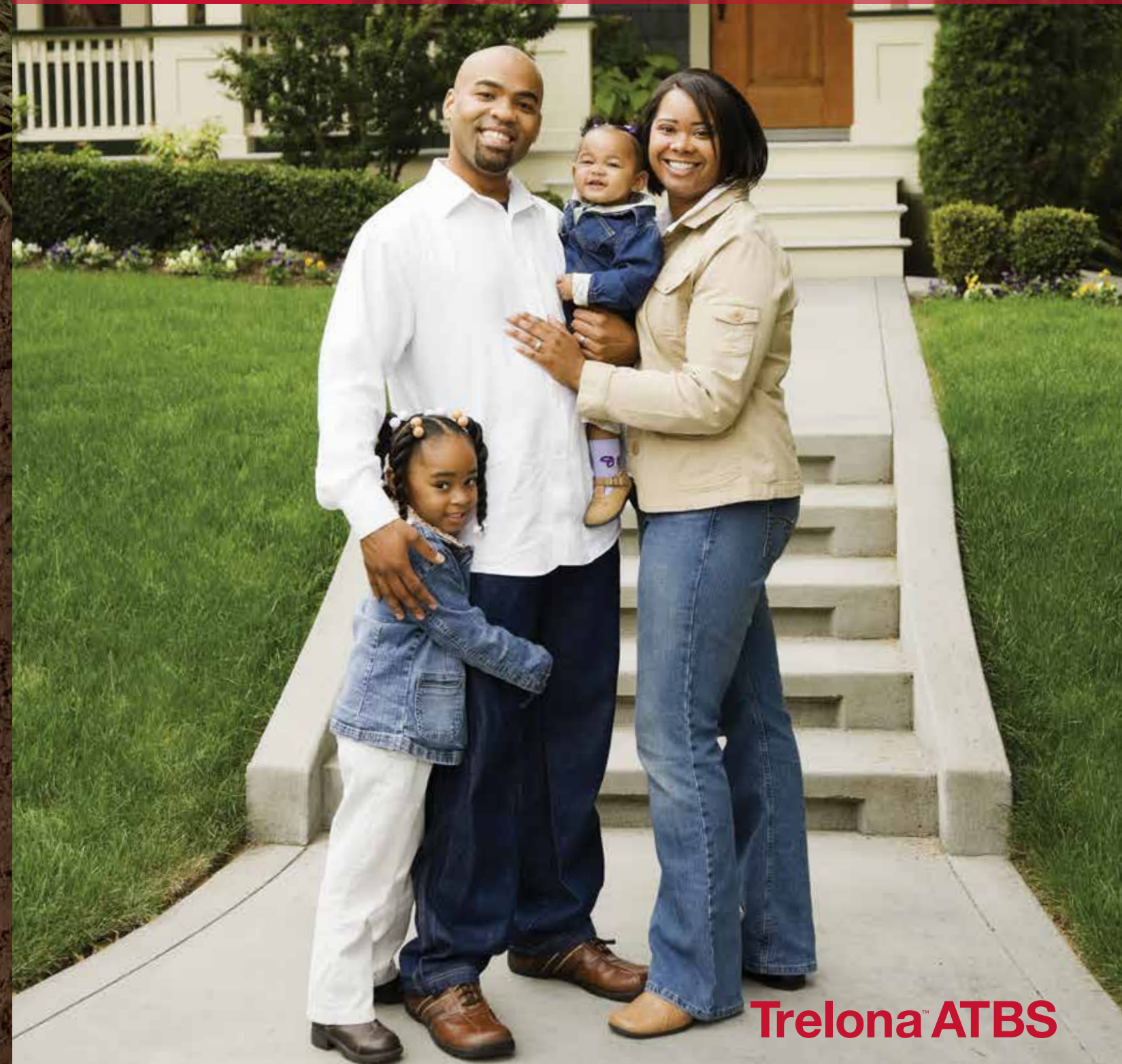
Dual food sources
Two food sources to quickly recruit a large number of termites to the station and to keep them there.

Always read and follow label directions.
Trelona is a trademark of BASF. Puri-Cell and Quik-Lock are registered trademarks of BASF.
©2014 BASF Corporation. All Rights Reserved.

Trelona ATBS

 **BASF**
The Chemical Company

Continuous, long-term protection
for your home — and your peace of mind.



Trelona ATBS

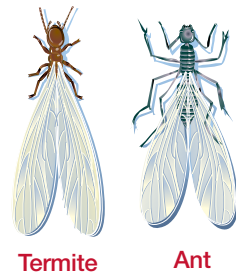
Your choices define who you are, choose Trelona™ ATBS (Advance® Termite Bait System) today for ultimate home protection.

Termites cause more than \$5 billion worth of damage each year in the U.S. alone and this damage is not covered by most homeowner's insurance policies. Because termites are found nationwide, it is not a matter of if you should protect your home from termites, but a choice of how you should protect your home. When it comes to termite baiting, nothing on the market today compares to **Trelona™ ATBS**.

What do termites look like and what are the warning signs of an infestation in my home?

Unfortunately, there may be few warning signs but you can look for the following:

- Termites "swarming" during the day or early evening, often after rainfall.
- Termite evidence in or around windows and doorframes.
- Shelter tubes appearing on or around the foundation.
- Baseboards and floors which may sound hollow.
- Dead termites or termite wings on window sills or along walls.



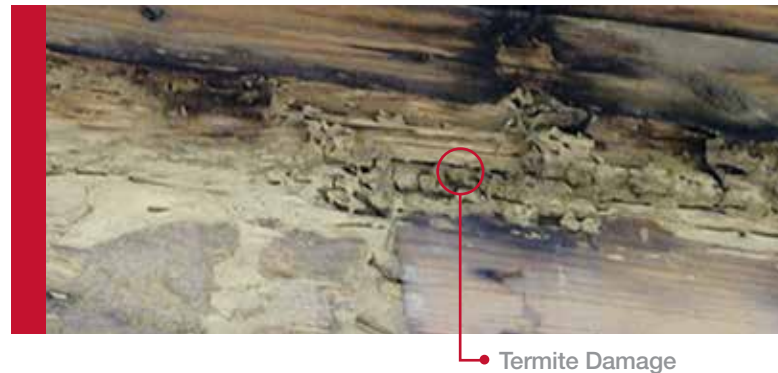
The best way to determine the presence of termites in your home is with a thorough home inspection from a pest management professional.

How does termite baiting actually work to control termites?

Termites are attracted to a food source, feed and then travel back to the colony. They share termite bait with other nestmates, return to the tunnels which reinforces the pheromone trails and provides a pathway for other termites to feed on the bait. As feeding on the bait continues and more and more termites are affected, the termite colony starts to die and is eliminated.

How are stations installed around my home and how often are they monitored?

Termite stations are strategically installed around the perimeter of your home, typically in landscape beds adjacent to the home.



Installation requires digging 2½-3 inch diameter x 1 feet deep cavities into the ground, these cavities are approximately 10–20 feet apart. Once the cavities are created, the stations are placed within the cavity. Your professional pest control company will suggest a termite program that is right for the level of termite activity according to the Environmental Protection Agency (EPA) mandated label and state regulations for your area.

Why choose Trelona ATBS over a competitive brand?

Trelona ATBS was designed with termites in mind. Termites exhibit instinctual behaviors, and so to obtain the best termite control, we need to think like a termite.

- The bait matrix in **Trelona™ Compressed Termite Bait** is a cellulose material that has been pressed into tablets. The matrix is a high-grade purified cellulose material that is highly palatable to termites.
- The slotted station and monitoring base encourage termite tunneling behavior.
- The dual-stage station design allows for ultra-low disturbance during routine inspections and less termite abandonment of the station. Components of competitors' designs must be completely lifted out of the station, disturbing termite feeding and tunneling.
- **Trelona ATBS** components are made of the highest quality materials and withstand extreme temperatures. Competitive stations wear easily and break under normal use which disrupts the zone of protection and can then disperse the termite activity throughout your environment and into your home.

Trelona™ ATBS Home Monitoring or Direct Baiting: which is right for my home?



Trelona™ ATBS Home Monitoring System

Provides a preventative termite control program, with the use of active bait only when necessary. This system is primarily for homeowners who want to protect their home but do not currently have active termites. The **Trelona™ ATBS Home Monitoring System** consists of several unique components that work together to create a localized point of termite colonization and control.

- **Trelona ATBS** consists of in-ground housing secured with a Quik-Lock® cap.



- Inside the station is the **Termite Monitoring Base (TMB)** and the **Termite Inspection Cartridge (TIC)** with **Puri-Cell®** monitoring tablets. The **TMB** is milled from select tree species favored by termites. Once installed within the bait station, the **TMB** creates significant wood-to-soil contact, a very conducive condition for termite activity.



- As termites move into and feed on the **TMB**, they readily forage upward into the **TIC** and locate the **Puri-Cell** monitoring tablets. This compels the termites to aggressively infest the station and exploit the **Puri-Cell** food source.

- Once termites are detected in the **TMB** and/or the **TIC**, the **TIC** is removed and a **Trelona Compressed Termite Bait Cartridge (TBC)** is installed. This begins the termite baiting process and the start of termite colony elimination.



Trelona ATBS Direct Baiting System

Provides a preventative and curative termite control program, with the use of active bait from the first day of installation. This system is primarily for homeowners who prefer to preventatively protect their homes from day one or immediately treat the home due to active termites.

ATBS can be used as a stand-alone structural protection treatment or it can be used in conjunction with a partial or full liquid treatment.

Trelona Direct Baiting System consists of several unique components that work together to create a localized point of termite colonization and control.

- **Trelona ATBS** consists of in-ground housing secured with a Quik-Lock cap.
- Inside the station is the **Termite Monitoring Base (TMB)** and the **Trelona Compressed Termite Bait Cartridge (TBC)**. The **TMB** is milled from select tree species favored by termites. Once the **TMB** is installed within the bait station, it creates significant wood-to-soil contact, a very conducive condition for termite activity.
- As termites move into and feed on the **TMB**, they readily forage upward into the **TBC** locating the **Puri-Cell** bait tablets. The palatability of the bait compels the termites to infest the station, consume and share the novaluron bait throughout the colony. This process of bait consumption and transfer begins the termite colony elimination process.